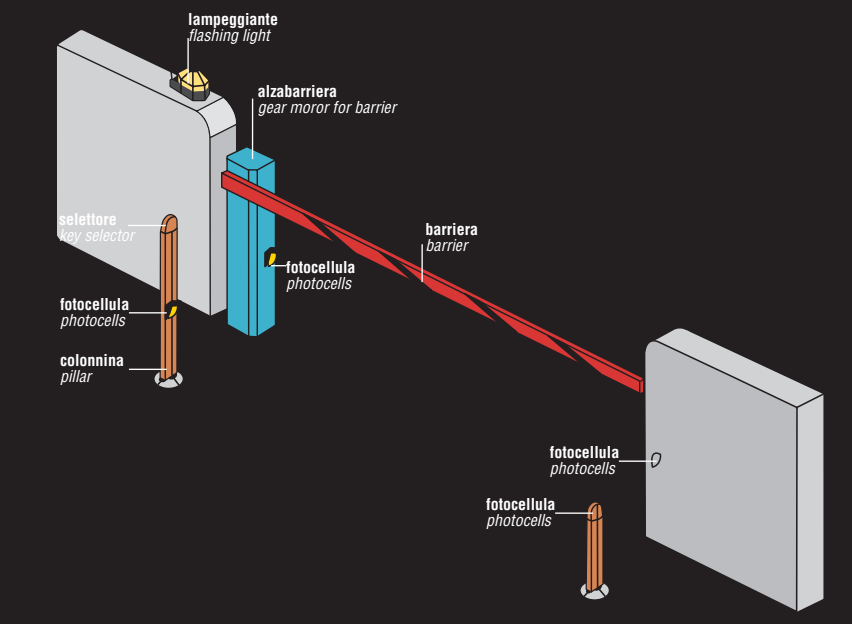
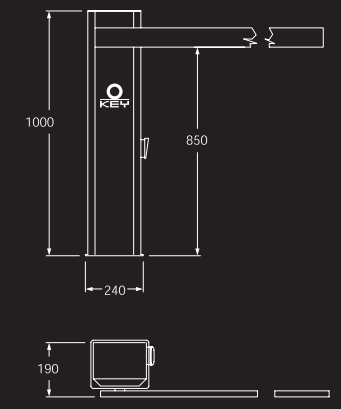
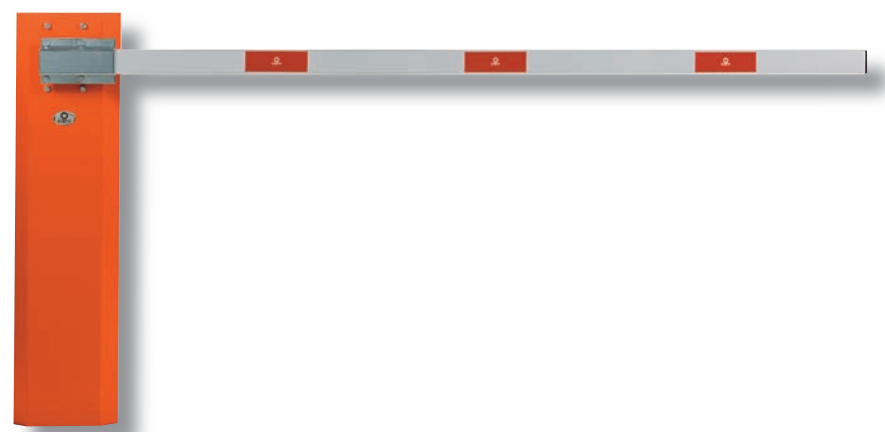


**MOTORIDUTTORE ELETTROMECCANICO IRREVERSIBILE PER ALZABARRIERA
CON ASTA FINO A 4 MT.
ELECTROMECHANICAL IRREVERSIBLE GEAR MOTOR FOR BASCULE BARRIER UP TO 4 MT.**

ALT 4



900BR-V

Con centralina incorporata. Motore 230Vac, 4,5 sec. Senza radio.
230Vac motor, with control unit, 4.5 sec. Whithout radio.

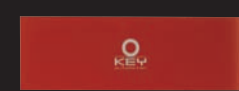
900BR-24

Con centralina incorporata. Motore 24Vdc con encoder, 5 sec. Uso intensivo. Senza radio.
24Vdc motor with encoder and control unit, 5 sec. Intensive use. Whithout radio.

CARATTERISTICHE TECNICHE / TECHNICAL DATA

	900BR-V	900BR-24
centralina / control unit	CT-1AS	CT-24SBA
alimentazione / feeding	230Vac	24Vdc
potenza assorbita / rated absorbed power	155W	150W
giri motore / motor rpm	1400	1200
assorbimento motore / motor absorption	0,67A	6A
condensatore / condenser	8µF	-
tempo di apertura / opening time	4,5 sec	5 sec
lunghezza max asta / max rod length	4mt	4mt
servizio temporaneo / temporary service	60%	80%
temperatura di esercizio / running temperature	-20°/+70°	-20°/+70°
peso / weight	35Kg	35Kg

ACCESSORI / ACCESSORIES



900AD
Strisce rosse adesive catarinfrangenti
Red reflecting adhesive stripes
1pcs.



900AS-4
Asta in alluminio da 4200 mm dim 60x30 mm
Alluminium stroke 4200 mm Dim 60x30 mm



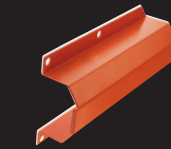
900APF
Appoggio fisso
Fix support



900AST4
Asta in alluminio tubolare ø 60x4250 mm, per applicazioni in presenza di forte vento
Aluminium tubular stroke ø 60x4250 mm, to be applied in case of strong wind



900APM
Appoggio mobile
Mobile support



900ATAST60
Attacco per asta tonda ø 60 mm.
Connection for round stroke ø 60 mm.



900CP-BR
Piastra di ancoraggio con zanche
Anchorage plate with rag bolts

