

**MOTORIDUTTORE ELETTROMECCANICO IRREVERSIBILE PER CANCELLI SCORREVOLI.  
ELECTROMECHANICAL IRREVERSIBLE GEAR MOTOR FOR SLIDING GATES.**



**TURBO 30**



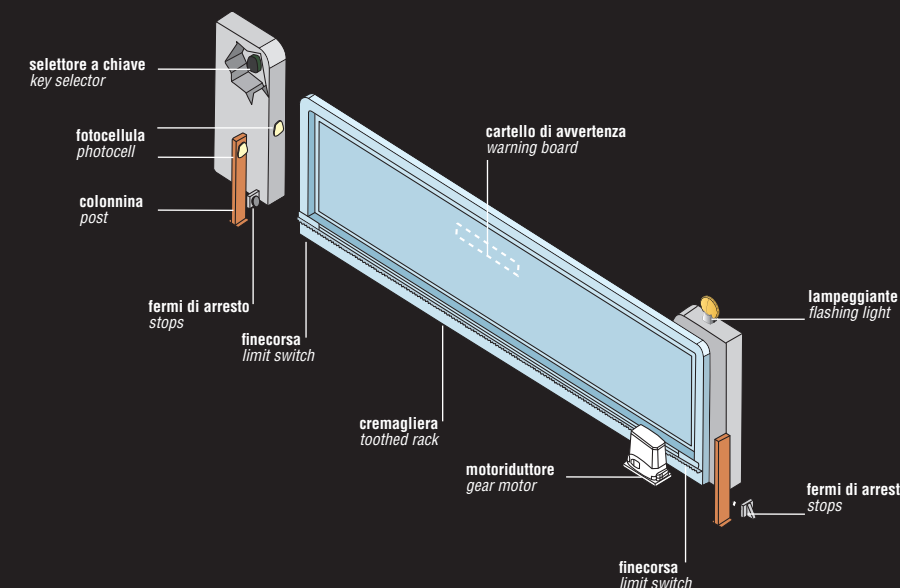
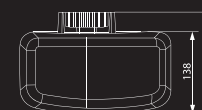
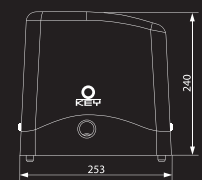
**900SC-30C**

€ 388,50

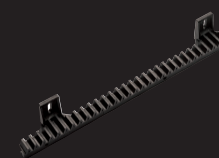
Con centralina e radio incorporata, motore 24Vdc, con encoder, 300 Kg, finecorsa magnetico.  
With control unit and radio card, 24Vdc motor with encoder, 300 Kg, with magnetic limit switch.

**CARATTERISTICHE TECNICHE / TECHNICAL DATA**

	<b>900SC-30C</b>
centralina / control unit	CT-24M
alimentazione / power	230Vac (24Vdc)
potenza assorbita / rated absorbed power	120W
assorbimento motore / motor absorption	5A
grado di protezione / protective degree	IP 54
coppia / couple	10Nm
velocità / speed	0,20 m/s
forza di spinta / thrust force	300N
peso max cancello / max gate weight	300Kg
classe di isolamento / insulation class	1
servizio temporaneo / temporary service	80%
temperatura di esercizio / running temperature	-20°/+70°
peso / weight	10,5Kg



**ACCESSORI / ACCESSORIES**



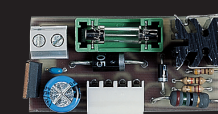
**900CREM-P**  
Cremagliera M4 in nylon L=1000 MM  
M4 nylon toothed rack L=1000 MM  
€ 16,28



**900CREM-12**  
Cremagliera M4 in ferro 30x12 MM L=1000 MM  
M4 iron toothed rack 30x12 MM L=1000 MM  
€ 19,95



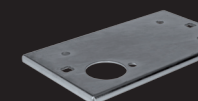
**900CREM-8**  
Cremagliera M4 in ferro 30x8 MM L=1000 MM  
M4 iron toothed rack 30x8 MM L=1000 MM  
€ 19,11



**900CABAT-30**  
Modulo carica batterie  
Battery charger  
€ 33,60



**900TS**  
Tabella segnaletica  
Warning board  
€ 2,21



**520CPSC-30**  
Contropiastra di fissaggio SC-30  
Fixing plate for SC-30  
€ 9,35

